

OUR CORE TECHNOLOGY
YOUR GREAT FUTURE

Zhuhai Bentsai Electronics Co.,Ltd.

Web:www.bentsai.com

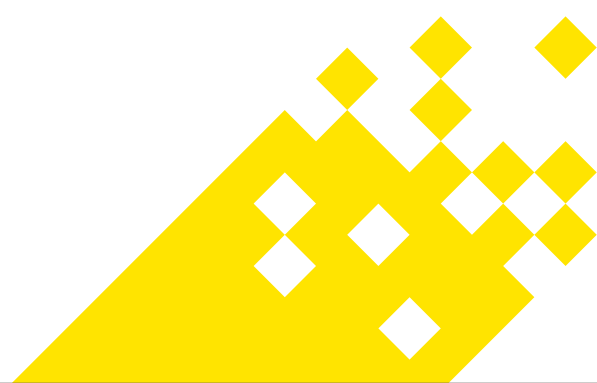
Add:2/F, Block B, Factory Building 1,
115 Huawei Road, Xiangzhou District, Zhuhai

HFG-0023-02



USER MANUAL

B80 Series (100 mm)
Wide Format Handheld Inkjet Printer



CONTENTS

Contents

Parts Composition	1
Operation Procedures	2
Technical Specifications.....	2
Precautions	3
Main Menu	3
Troubleshooting	8
Packing List	9
Warranty Instructions	11
Warranty Card	12



Parts Composition



Operation Process

① **Ink cartridge installation:** Press the upper cover opening button to open the upper cover, insert the ink cartridge into the machine, and close the upper cover.

Note : When installing the ink cartridges, please install them in order from the No.1 ink cartridge. Check the holes on Aluminum alloy panel, make sure that the nozzle of the ink cartridge is parallel to the panel, and installing the ink cartridge in correct position.

② **Printing procedure:** Press the power switch to start the machine → [Print Edit] → Select the content type → Edit the content → Click [Print] → Remove the protective cover of the nozzle → Lay the main and auxiliary rollers to the product surface → Hold down the print button and slide at a constant speed after hearing the "beep" sound to print → Print job done.

③ **Printer close procedure:** Click the [Cancel] button when printing job finished. Recap the nozzle protection cover.

Technical Specifications

Content	Specifications
Printing Technology	Thermal Inkjet (TIJ)
Operating system	Linux based
External source interface	USB-A, USB-C, Power adapter, Photoelectric Sensor, Encoder, Beacon
Status Alarm	Green: Ready Blue: Printing Red: Alarm
System Language	Chinese/English/German/Arabic/Spanish/Russian/Japanese/Korean/Italian/Portuguese/French/Hindi/Thai/Vietnamese/Persian/Turkish/Chinese Traditional/Indonesian/Slovenian/Serbo-Croatian/Czech/Bulgarian/Romanian/Polish/Greek/Hungarian/Ukrainian/Slovak/Burmese (Available languages vary for different regions)
Print Height	2.5mm-9.6mm (1-40 lines)300dpi
Ink Throw Distance	2-5mm (Distance between nozzle plate and print object)
Ink capacity	42ml
Ink color	Black, red, yellow, blue,
Print Applications	Text, Numbers, Images, Logos, 2Dcodes, Barcodes, Dates, Counter, Database etc.
Jet printing font	Vector font ,dot matrix font
Battery	6000mAh
Power Adapter	IN: AC100-240V OUT: DC9.3V-5A
Machine size	239*182*117mm
Net Weight	1.25KG(with battery)
Working Environment	Working Temperature: 5-35°C Storage Temperature: 0-45°C Relative Humidity: 10%-80



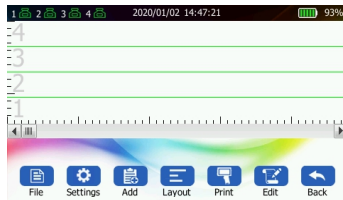
Precautions

- ⚠ Prohibition of the use of non-original ink cartridges.
- ⚠ After the machine finishes printing, please cover the head cover in time to prevent the head of the ink cartridge from being blocked.
- ⚠ Please refer to **Troubleshooting** for abnormal machine. It is forbidden to uninstall the machine.
- ⚠ Don't privately remove ink cartridge chip, affecting the normal use of the machine.
- ⚠ When cleaning the machine, keep away from water and don't use chemical solvents.
- ⚠ Don't place the machine in a wet environment for a long time, causing the circuit to be damp.

Main menu



Print edit



- File: Create, Open, Save, Save as, Template .
- Settings: Set printing parameters .
- Add : Add content from other categories, such as QR code, image, time, tags, and more.
- Lign: adjust print content position.
- Print: Determine the current editing content and the jet printer works.
- Edit: Reed selected content.
- Back: Return to previous menu.

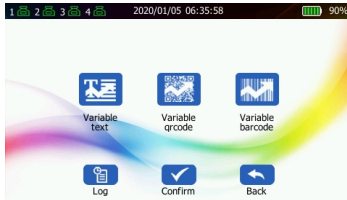
Printing settings



- Printing resolution: 300dpi.
- Printing mode: Handheld, photoelectric, continuous mode.
- Printing direction: From Left to right, From right to left.
- Synchronization mode: Hall wheel or synchronizer.
- Gray scale: 1-10 level. Different materials use different gray levels, and gray levels can be selected according to the actual material.
- First trigger: the photoelectric sensor triggers when it is sensed.
- Printing delay: 0-1000mm, can be set in the photoelectric, continuous mode.
- Printing speed: 50-1000mm/s, can be set in the photoelectric, continuous mode.
- Number of prints: Set the total number of single prints in continuous mode.
- Printing interval: Set the distance between two prints in continuous mode.



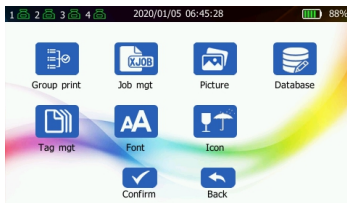
Database printing



- Can print variable text, QR code and barcode, realizing one object with one code (variable marking). This function only configures individual models.

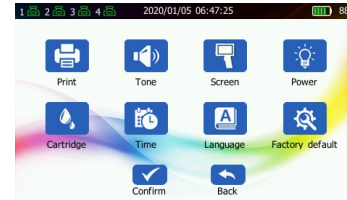
Note: In general, for database printing, the database printing file txt/csv from Excel, have to be saved as: "Unicode text(*.txt)", "CSV UTF-8 (comma separated) (*.csv)"; and encoding only supports UTF-8.

Print management



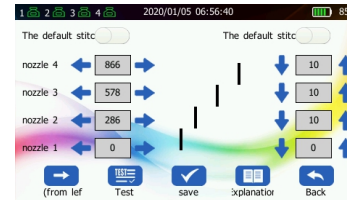
- Manage the local storage archives.
 - Group print: Add the job management files to the print list, then print.
 - Job management: Delete or rename the job archives.
 - Picture management: Manage the pictures.
 - Database management: Data line Delete, rename.
 - Template management: delete, rename template file lines.
 - Font management: delete, rename font file lines.

System settings



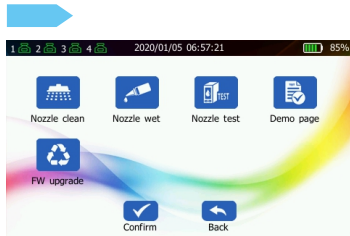
- Print settings: set printing parameters.
- Prompt tone settings: set the machine's working prompt tone.
- Screen settings: set screen brightness.
- Power settings: standby, shutdown time settings.
- Ink parameter settings: adjust cartridge voltage, pulse width parameters.
- Time settings: settings Local system time.
- Language setting: Set local system language.
- Restore factory settings: Restore the initial settings of system parameters.

Ink cartridge parameter settings



- User: defined value—only open the user-defined value, parameter of the nozzle position can be adjusted, Display default values cannot be debugged.
- Nozzle position adjustment from left to right and up and down: can adjust the print content to move to the corresponding direction, 1 unit is approximately equal to 0.1mm.
- From left to right: Direction of movement during printing.

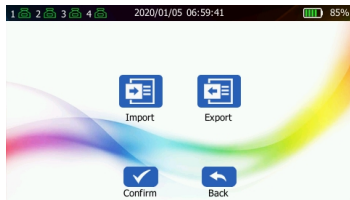
- Test: After setting the parameters, you can print the test and view the test effect quickly.
- Save: Save the changed setting parameters.
- Description: Related Debugging instructions.



! Routine maintenance and system upgrades of the machine and cartridge

Note: Ensure that the printer remaining power is above 25% before firmware upgrade. In case it is insufficient, connect the charger during the upgrading process. Power off during the upgrade process may damage the printer.

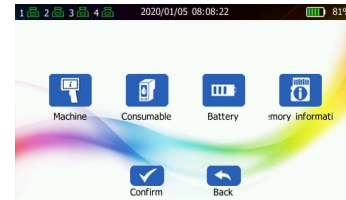
Mobile storage



! Data can be exported and imported, including jobs, pictures, databases, templates, fonts.

Note: Picture should be named by numbers and letters. This machine can recognize BMP, JPEG and PNG formats. Picture resolution does not exceed 566*12800 pixel.

Device information



- Machine information: can check the product model, device serial number, firmware version.
- Consumables information: can check the total amount of printing, ink cartridge usage.
- Battery information: can check the battery status, remaining power, charge times.
- Memory information: can check the machine memory capacity.

Troubleshooting

No.	Failures	Cause	Solutions
1	Failed to power on	Low or damaged battery	Recharge/Replace the battery
		Poor Battery Contact	Reinstall the battery
2	Failed to print	Incorrect ink cartridge installation	Reinstall the ink cartridge
		Ink cartridge depleted	Replace with a new ink cartridge
		Incorrect parameter settings	Restore factory settings
		Wrongly edited print content	Re-edit your print content
3	Unclear Printing	Abnormal roller rolling	Clean debris on the roller gaps
		Incorrect parameter settings	Restore factory settings
		Clogged ink nozzles	Clean the ink nozzles
		Ink cartridge depleted	Replace with a new ink cartridge
		Insufficient power	Recharge or replace the battery

Error messages shown on printer screen and Solutions

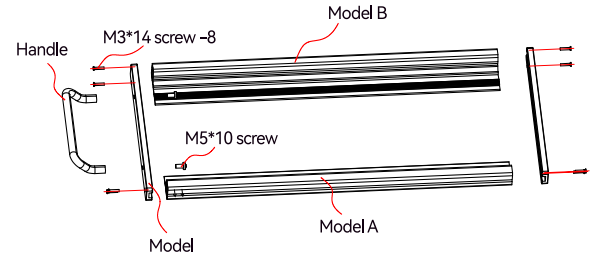
No.	Error Message	Error Message Code	Solutions
1	Ink cartridge not installed	NA	Reinstall the ink cartridge
2	Ink cartridge not recognized	03	Replace the cartridge or cartridge smart chip
3	Ink cartridge error	04/05/07/08	Replace the cartridge or cartridge smart chip
4	Ink cartridge error	06	Incorrect cartridge installed, replace with the correct cartridge model
5	Ink low	NA	Ink volume less than 5%
6	Ink finished	NA	Ink volume less than 20%

Packing List

NO.	Name	Quantity
1	Wide format handheld inkjet printer	1 set
2	Ink cartridge	4 pcs
3	Adaptor	1 pcs
4	Positioning bracket	1 sheet
5	Qualified certificate	1pcs
6	Production instruction manual	1pcs
7	Power line	1pcs

Note: Optional accessories and components need to be purchased independently.

Positioning bracket assembly instructions



Ink pumping clip suction instructions

When the printing content is partially lack of ink, please use ink pumping clip which is shown on the right. Pull the syringe piston to move outward to 2ml scale position, the suction is finished when 0.5ml is drawn out.



Warning

Replacing the battery with an incorrect type may bring the risk of fire, explosion, or damage to the device. Replace only with the same or equivalent battery type.

Throwing a battery into a fire, into a hot oven, mechanically crushing or cutting a battery can cause an explosion.

Batteries may be subjected to high or low temperature extremes or high altitude and low air pressure during use, storage or transportation.

Exposing the battery to extremely high temperature or low pressure may result in an explosion or leakage of flammable liquid or gas.



Warranty Instructions

Dear customer,

Thank you for purchasing our handheld/inline inkjet printer! To ensure the safe use of the product and your benefits and interests, please read the following content carefully, fill in and keep the warranty card properly.

This product is a precision instrument. In case of any abnormality, refer to this manual for troubleshooting or contact the customer service center of your seller.

■ Term of Service

1. This product is with a one-year warranty period. The starting date of the warranty period is subject to the date of the product invoice.
2. During the warranty period, if the product is under normal use and maintenance and failure is caused by the quality of the machine itself, the company will provide free repair and replacement parts.
3. Vulnerable parts are excluded, such as ink cartridges, screens, removable storage, switches, chargers, batteries, which shall not be covered by the warranty.

■ Disclaimer

Any of the following conditions shall not be covered by the warranty:

1. Damage due to improper transportation, use, storage, and maintenance, or man-made damage.
2. Unauthorized repair or the user installs, disassembles, and repairs the machine by himself.
3. Damages caused by using non-genuine consumables or accessories which are not provided by the company.
4. Missed or modified warranty card.
5. Beyond the warranty period.
6. Damage caused by force majeure.

Warranty Card

Product Related information

Customer Name: _____ Contact Phone: _____

Mailing Address: _____

Product Model: _____ Product ID: _____

Store Purchased: _____ Purchase Date: _____

Maintenance Store: _____ Invoice No.: _____

Maintenance Record

Date of Maintenance: _____

Failure Description: _____

Solution: _____

Maintained by: _____ Contact Phone: _____ Staff Signature: _____

Fill in this warranty card in time after purchasing this printer. Please keep the warranty card properly, and it is not required to send it back to the seller. Carry the warranty card and the original invoice for maintenance.

Zhuhai Bentsai Electronics Co.,Ltd.